

Technical data sheet



Product features

Model	SAP Code	00110048
BR 70/80 G	A group of articles - web	Pans



- Bottom material: Steel - suitable for frying
- Bottom thickness: 12.00
- Basin volume [l]: 50
- Usable volume [l]: 50
- Ignition: Piezo
- Tilting: Manual
- Filling: Mechanical cock
- Type of pan: Tilting
- Basin shape: Practically shaped bathtub spout to minimize spillage
- Protection of controls: IPX4

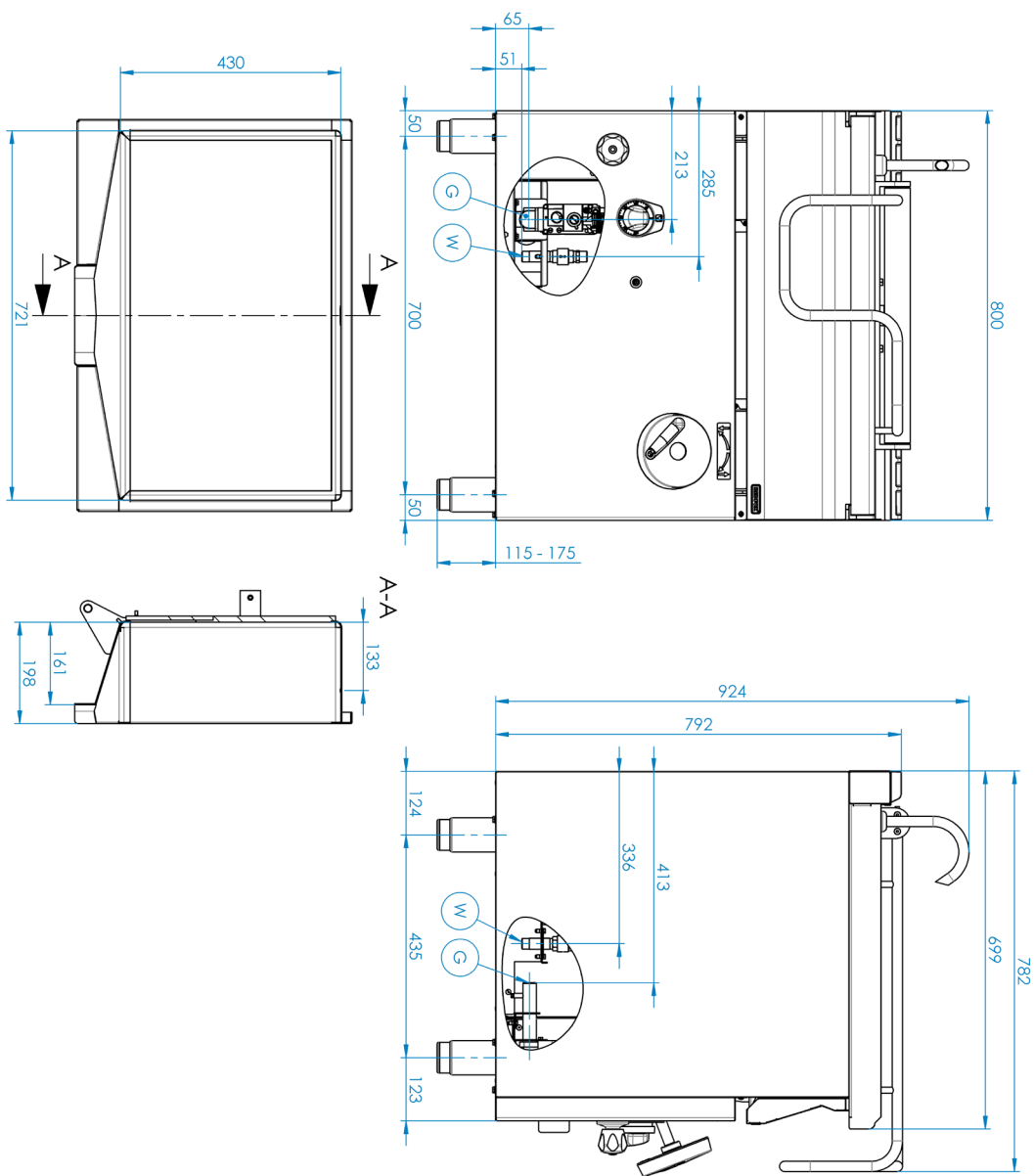
SAP Code	00110048	Power gas [kW]	12.000
Net Width [mm]	860	Type of gas	Natural gas, propane butane
Net Depth [mm]	820	Bottom material	Steel - suitable for frying
Net Height [mm]	1079	Basin volume [l]	50
Net Weight [kg]	138.00	Usable volume [l]	50
Power electric [kW]	0.000	Tilting	Manual

Technical data sheet



Technical drawing

Model	SAP Code	00110048
BR 70/80 G	A group of articles - web	Pans



Technical data sheet



Product benefits

Model	SAP Code	00110048
BR 70/80 G	A group of articles - web	Pans

1

Safety element – thermocouple

safe service for staff
there is no unnecessary gas leakage
long life

- savings on service interventions
- easier and faster operation

2

Manual folding system

maintenance-free system
resistance to splash water
long life

- savings on service interventions
- easy cleaning and maintenance of equipment

3

Degree of protection of the control elements IPX4

maintenance-free system
resistance to splash water
long life

- savings on service interventions
- easy cleaning and maintenance of equipment

4

Efficient distribution of heating elements

perfect heat distribution including corners
fast heating

- saving time when cooking
- saving energy
- long service life

Technical data sheet



Technical parameters

Model	SAP Code	00110048
BR 70/80 G	A group of articles - web	Pans

1. SAP Code:

00110048

2. Article group:

RF-Line 700

3. Net Width [mm]:

860

4. Net Depth [mm]:

820

5. Net Height [mm]:

1079

6. Net Weight [kg]:

138.00

7. Gross Width [mm]:

860

8. Gross depth [mm]:

820

9. Gross Height [mm]:

1079

10. Gross Weight [kg]:

151.40

11. Device type:

Gas unit

12. Power electric [kW]:

0.000

13. Power gas [kW]:

12.000

14. Ignition:

Piezo

15. Type of gas:

Natural gas, propane butane

16. Protection of controls:

IPX4

17. Material:

AISI 304 top plate, AISI 430 cladding

18. Basin volume [l]:

50

19. Maximum device temperature [°C]:

300

20. Minimum device temperature [°C]:

50

21. Safety thermostat:

Yes

22. Safety thermostat up to x ° C:

360

23. Adjustable feet:

Yes

24. Tilting:

Manual

25. Bottom thickness:

12.00

26. Bottom material:

Steel - suitable for frying

27. Type of pan:

Tilting

28. Usable volume [l]:

50

29. Filling:

Mechanical cock

30. Basin shape:

Practically shaped bathtub spout to minimize spillage

31. Water filling type:

Cold